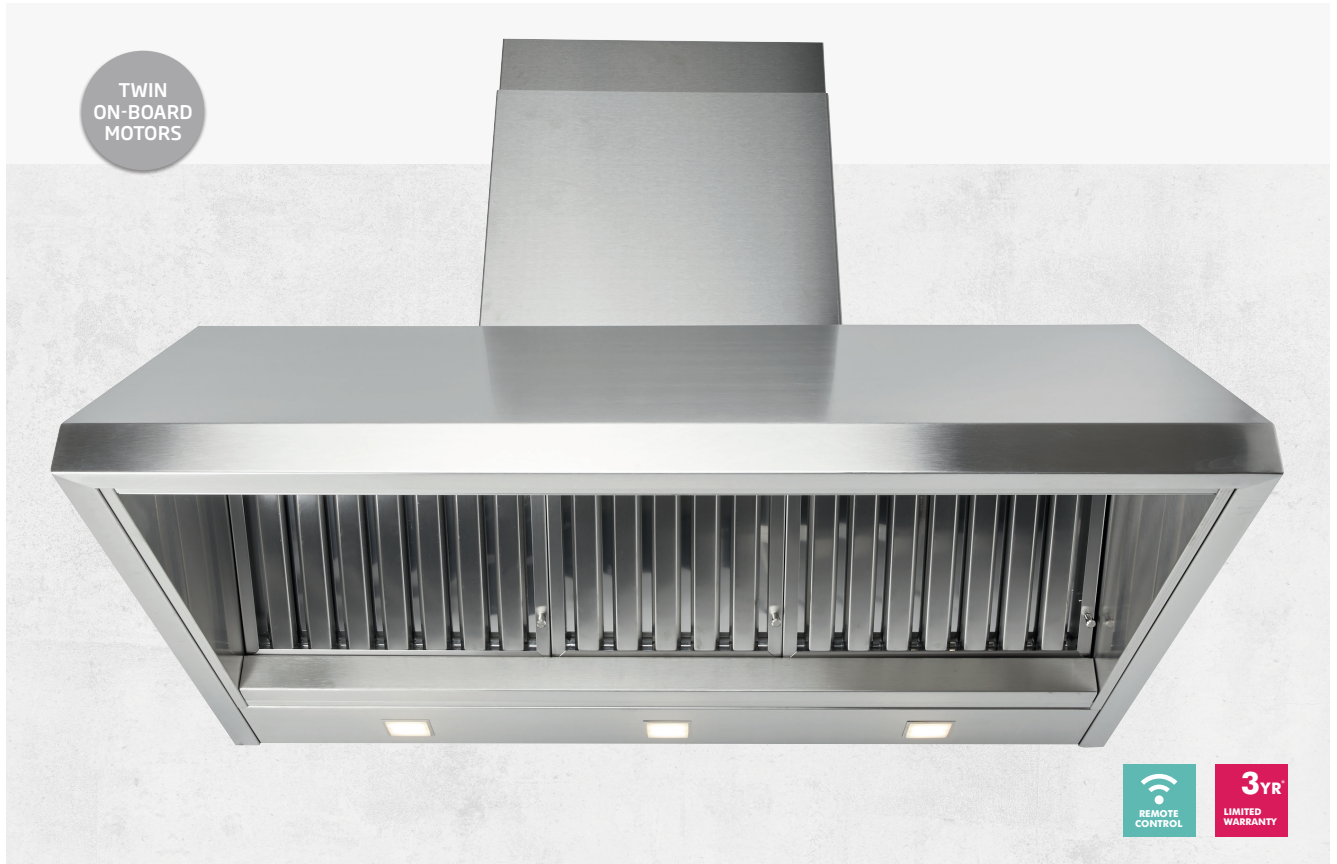




DBH1200 // 120cm // ON-BOARD MOTOR



Introducing our premium BBQ Alfresco Rangehood, the epitome of sophistication and performance. Crafted with exquisite 304 stainless steel, this high-end appliance seamlessly combines durability with aesthetics. The powerful twin-internal motors boast an impressive 2200m³/h extraction power, ensuring a smoke-free and enjoyable cooking experience. Designed for professional-grade functionality, the commercial-grade dishwasher-safe baffles effortlessly capture grease and residue. Illuminate your outdoor culinary space with three warm LED lights, providing both ambiance and visibility. Experience unparalleled convenience with the included remote control, allowing you to effortlessly control and customize your cooking environment. Elevate your alfresco cooking with this exceptional rangehood, where luxury meets functionality.

PRODUCT DESCRIPTION

- quality 304 grade stainless steel
- powerful twin internal motors
- 4 speed touch sensitive controls, with remote
- 15 minute auto shut off
- LED lights
- dishwasher safe, commercial grade baffles
- 3 Year rangehood Warranty

TECHNICAL DATA

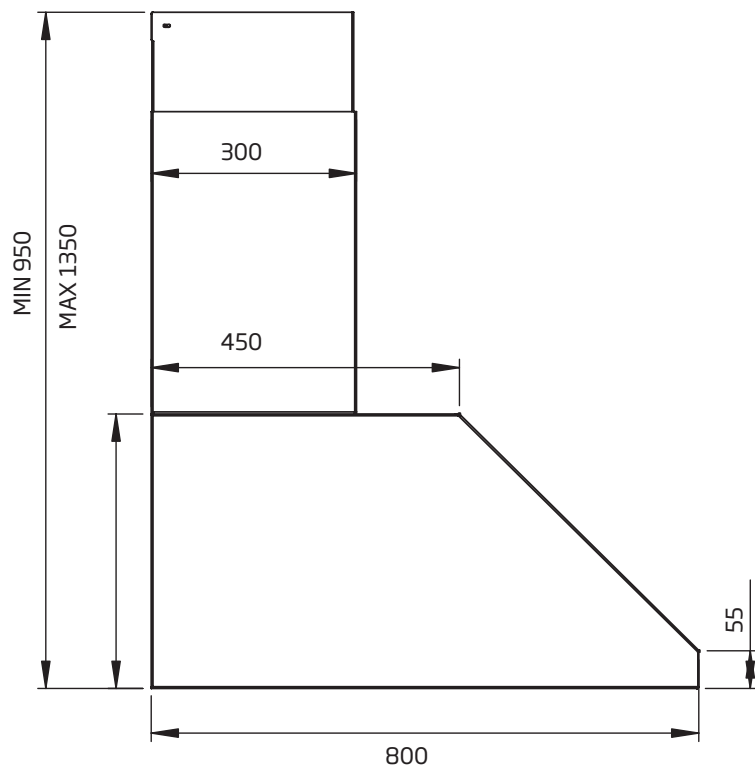
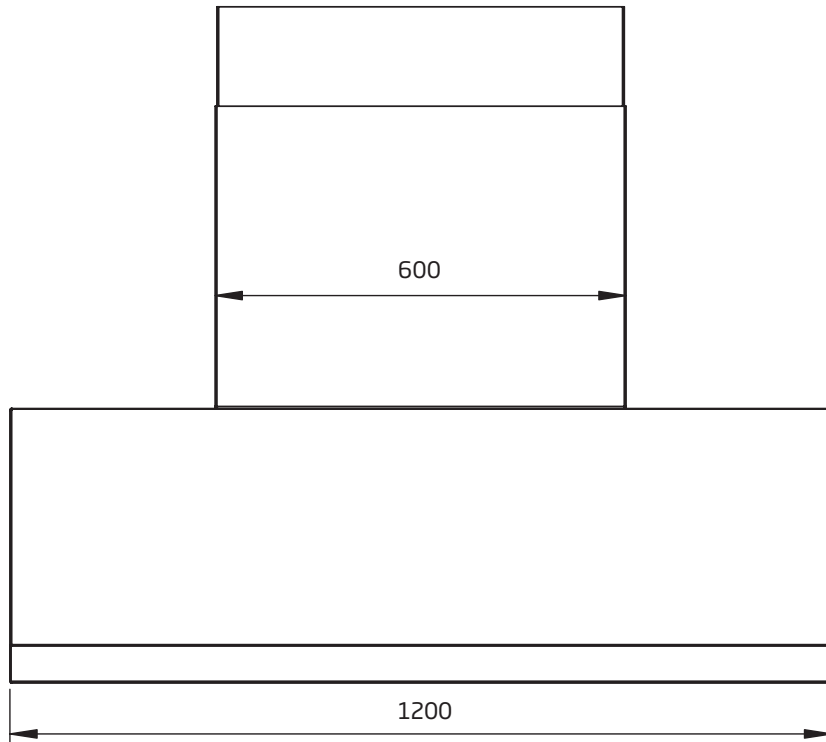
- **DBH1200** dimensions: (W x D) 1200 x 800 mm, 3 x baffles, 3 x LED lights

INTERNAL MOTOR

- Twin internal motors
- Airflow - 2200m³/h



DBH1200 // 120cm // ON-BOARD MOTOR



Model: DBH1200
Feeding Voltage: 220-240V 50Hz
Max Lamp Power: 3 x 2.1W